



Viewpoint 27b      Views from public footpath (NT/Fledborough/FP11), west of the River Trent (Summer)

Type: Type 1  
Projection: Cylindrical  
48% @ A3, 96% @ A1  
Camera: Canon EOS 6D MkII  
Lens: Canon 50mm

Looking direction: south west  
HfoV: 90 degrees  
Date captured: 06.03.2024

<div>ICENI PROJECTS LIMITED</div> <div>Da Vinci House 44 Saffron Hill</div> <div>London, ECN1 8FH</div> <div>iceni</div>	PROJECT	One Earth Solar Farm	DRAWN BY	JG	DRAWING NO.
	DRAWING TITLE	Appendix 12-6: Representative Viewpoint Photography	CHECKED BY	SG	Figure 12-27b-s
	CLIENT	One Earth Solar Ltd	DATE	30/04/2024	REV
					-






Viewpoint 28a      Views from public footpath (NT/Fledborough/FP10), north of Fledborough (Winter)

Type: Type 1  
Projection: Cylindrical  
48% @ A3, 96% @ A1  
Camera: Canon EOS 6D MkII  
Lens: Canon 50mm

Looking direction: south  
HfoV: 90 degrees  
Date captured: 06.03.2024

<div><div>ICENI PROJECTS LIMITED</div><div>Da Vinci House 44 Saffron Hill</div><div>London, ECN1 8FH</div></div> <div></div>	PROJECT	One Earth Solar Farm	DRAWN BY	JG	DRAWING NO.
	DRAWING TITLE	Appendix 12-6: Representative Viewpoint Photography	CHECKED BY	SG	Figure 12-28a-W
	CLIENT	One Earth Solar Ltd	DATE	30/04/2024	REV





Viewpoint 28a

Views from public footpath (NT/Fledborough/FP10), north of Fledborough (Summer)

Type: Type 1  
Projection: Cylindrical  
48% @ A3, 96% @ A1  
Camera: Canon EOS 6D MkII  
Lens: Canon 50mm

Looking direction: south  
HfoV: 90 degrees  
Date captured: 06.03.2024

<div><div>ICENI PROJECTS LIMITED</div><div>Da Vinci House 44 Saffron Hill</div><div>London, ECN1 8FH</div></div> <div></div>	PROJECT	One Earth Solar Farm	DRAWN BY	JG	DRAWING NO.
	DRAWING TITLE	Appendix 12-6: Representative Viewpoint Photography	CHECKED BY	SG	Figure 12-28a-S
	CLIENT	One Earth Solar Ltd	DATE	30/04/2024	REV
					-





Viewpoint 28b      Views from public footpath (NT/Fledborough/FP10), north of Fledborough (Winter)

Type: Type 1  
Projection: Cylindrical  
48% @ A3, 96% @ A1  
Camera: Canon EOS 6D MkII  
Lens: Canon 50mm

Looking direction: east  
HfoV: 90 degrees  
Date captured: 06.03.2024

<div><div>ICENI PROJECTS LIMITED</div><div>Da Vinci House 44 Saffron Hill</div><div>London, ECN1 8FH</div></div> <div></div>	PROJECT	One Earth Solar Farm	DRAWN BY	JG	DRAWING NO.
	DRAWING TITLE	Appendix 12-6: Representative Viewpoint Photography	CHECKED BY	SG	Figure 12-28b-W
	CLIENT	One Earth Solar Ltd	DATE	30/04/2024	REV



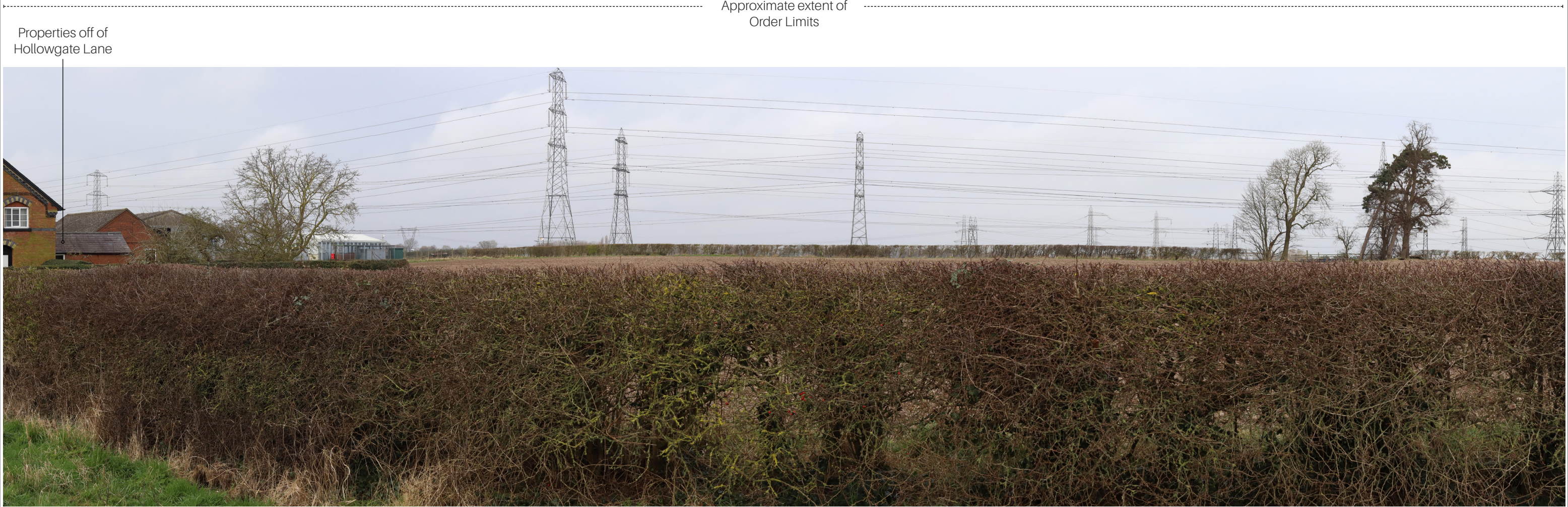


Viewpoint 28b Views from public footpath (NT/Fledborough/FP10) north of Fledborough (Summer)

Type: Type 1  
Projection: Cylindrical  
48% @ A3, 96% @ A1  
Camera: Canon EOS 6D MkII  
Lens: Canon 50mm  
Looking direction: east  
HfoV: 90 degrees  
Date captured: 06.03.2024

<div><div>ICENI PROJECTS LIMITED</div><div>Da Vinci House 44 Saffron Hill</div><div>London, ECN1 8FH</div></div> <div></div>	PROJECT	One Earth Solar Farm	DRAWN BY	JG	DRAWING NO.
	DRAWING TITLE	Appendix 12-6: Representative Viewpoint Photography	CHECKED BY	SG	Figure 12-28b-s
	CLIENT	One Earth Solar Ltd	DATE	30/04/2024	REV





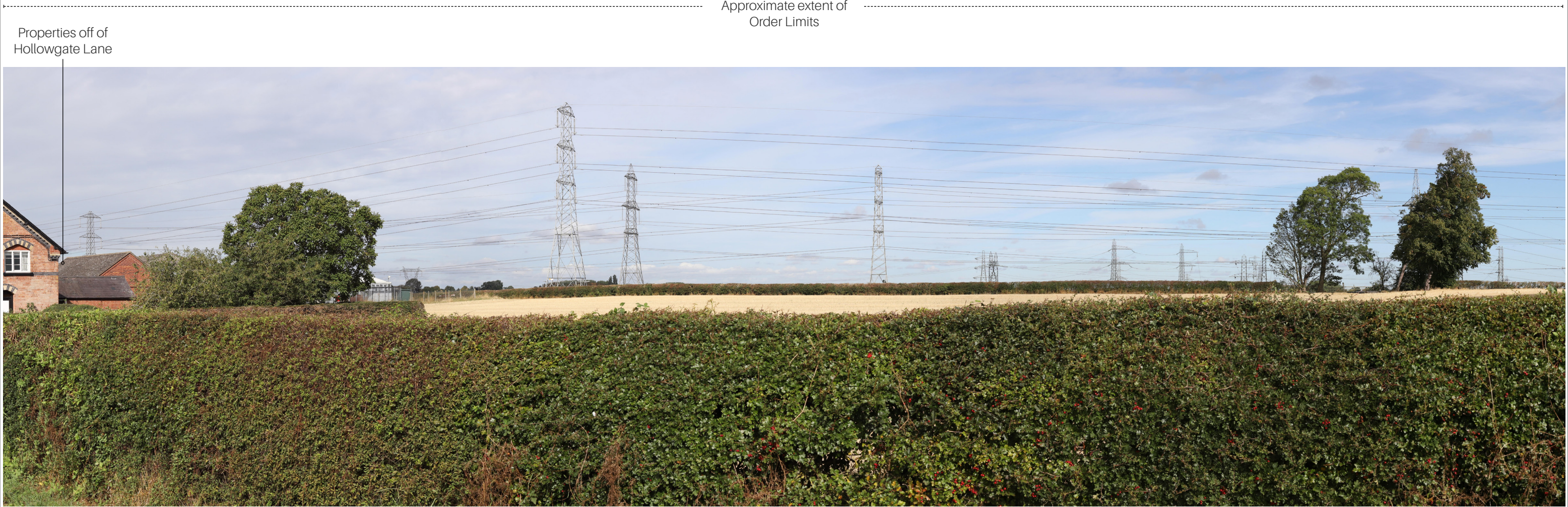
Viewpoint 29      View from Hollowgate Lane, High Marnham (Winter)

Type: Type 1  
Projection: Cylindrical  
48% @ A3, 96% @ A1  
Camera: Canon EOS 6D MkII  
Lens: Canon 50mm

Looking direction: north  
HfoV: 90 degrees  
Date captured: 06.03.2024

<div>ICENI PROJECTS LIMITED</div> <div>Da Vinci House 44 Saffron Hill</div> <div>London, ECN1 8FH</div> <div></div>	PROJECT	One Earth Solar Farm	DRAWN BY	JG	DRAWING NO.
	DRAWING TITLE	Appendix 12-6: Representative Viewpoint Photography	CHECKED BY	SG	Figure 12-29-W
	CLIENT	One Earth Solar Ltd	DATE	30/04/2024	REV
					-





Viewpoint 29

View from Hollowgate Lane, High Marnham (Summer)

Type: Type 1  
Projection: Cylindrical  
48% @ A3, 96% @ A1  
Camera: Canon EOS 6D MkII  
Lens: Canon 50mm

Looking direction: north  
HfoV: 90 degrees  
Date captured: 06.03.2024

<div>ICENI PROJECTS LIMITED</div> <div>Da Vinci House 44 Saffron Hill</div> <div>London, ECN1 8FH</div> <div></div>	PROJECT	One Earth Solar Farm	DRAWN BY	JG	DRAWING NO.
	DRAWING TITLE	Appendix 12-6: Representative Viewpoint Photography	CHECKED BY	SG	Figure 12-29-S
	CLIENT	One Earth Solar Ltd	DATE	30/04/2024	REV
					-



Agricultural buildings in  
Low Marnham

Approximate extent of  
Order Limits



Viewpoint 30

View from public footpath (NT/Marnham/FP2), Low Marnham (Winter)

Type: Type 1  
Projection: Cylindrical  
48% @ A3, 96% @ A1  
Camera: Canon EOS 6D MkII  
Lens: Canon 50mm

Looking direction: north west  
HfoV: 90 degrees  
Date captured: 06.03.2024



Agricultural buildings in  
Low Marnham

Approximate extent of  
Order Limits




Viewpoint 30

View from public footpath (NT/Marnham/FP2), Low Marnham (Summer)

Type: Type 1  
Projection: Cylindrical  
48% @ A3, 96% @ A1  
Camera: Canon EOS 6D MkII  
Lens: Canon 50mm

Looking direction: north west  
HfoV: 90 degrees  
Date captured: 06.03.2024

<div>ICENI PROJECTS LIMITED</div> <div>Da Vinci House 44 Saffron Hill</div> <div>London, ECN1 8FH</div> <div></div>	PROJECT	One Earth Solar Farm	DRAWN BY	JG	DRAWING NO.
	DRAWING TITLE	Appendix 12-6: Representative Viewpoint Photography	CHECKED BY	SG	Figure 12-30-S
	CLIENT	One Earth Solar Ltd	DATE	30/04/2024	REV
					-






Viewpoint 31      View from public footpath (NT/Normanton-On-Trent/FP8), north-east of Normanton on Trent (Winter)

Type: Type 1  
Projection: Cylindrical  
48% @ A3, 96% @ A1  
Camera: Canon EOS 6D MkII  
Lens: Canon 50mm

Looking direction: north  
HfoV: 90 degrees  
Date captured: 06.03.2024

<div>ICENI PROJECTS LIMITED</div> <div>Da Vinci House 44 Saffron Hill</div> <div>London, ECN1 8FH</div> <div></div>	PROJECT	One Earth Solar Farm	DRAWN BY	JG	DRAWING NO.
	DRAWING TITLE	Appendix 12-6: Representative Viewpoint Photography	CHECKED BY	SG	Figure 12-31-W
	CLIENT	One Earth Solar Ltd	DATE	30/04/2024	REV
					-






Viewpoint 31      View from public footpath (NT/Normanton-On-Trent/FP8), north-east of Normanton on Trent (Summer)

Type: Type 1  
Projection: Cylindrical  
48% @ A3, 96% @ A1  
Camera: Canon EOS 6D MkII  
Lens: Canon 50mm

Looking direction: north  
HfoV: 90 degrees  
Date captured: 06.03.2024

<div>ICENI PROJECTS LIMITED</div> <div>Da Vinci House 44 Saffron Hill</div> <div>London, ECN1 8FH</div> <div></div>	PROJECT	One Earth Solar Farm	DRAWN BY	JG	DRAWING NO.
	DRAWING TITLE	Appendix 12-6: Representative Viewpoint Photography	CHECKED BY	SG	Figure 12-31-S
	CLIENT	One Earth Solar Ltd	DATE	30/04/2024	REV
					-






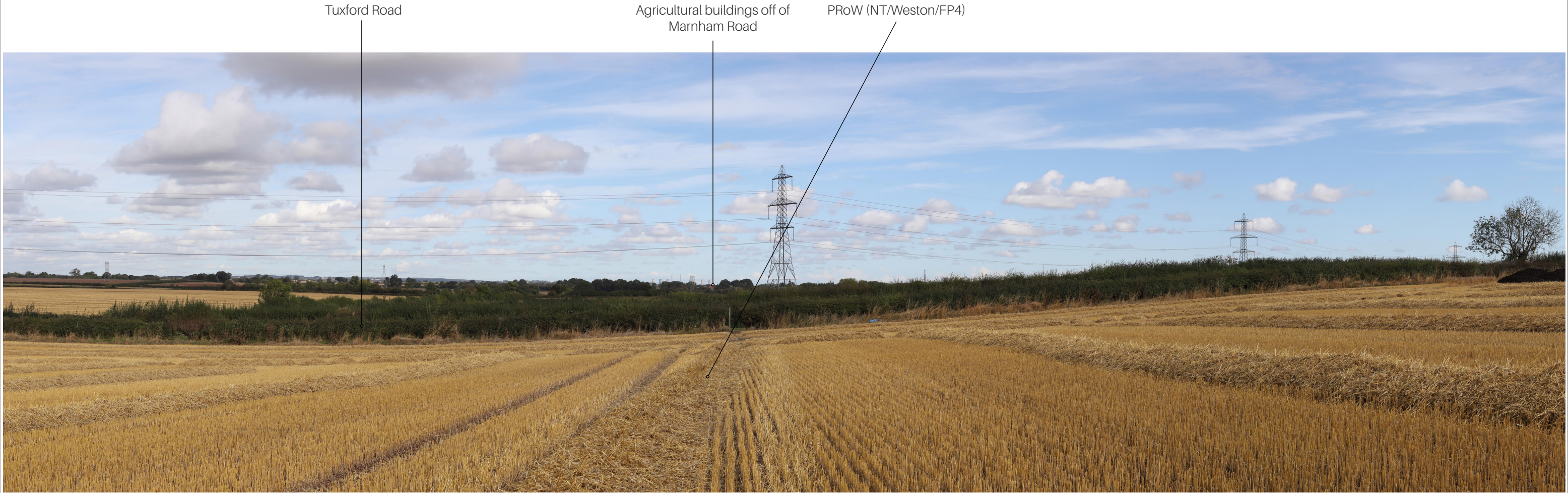
Viewpoint 32      View from public footpath (NT/Weston/FP4), south of Tuxford Road (Winter)

Type: Type 1  
Projection: Cylindrical  
48% @ A3, 96% @ A1  
Camera: Canon EOS 6D MkII  
Lens: Canon 50mm

Looking direction: north  
HfoV: 90 degrees  
Date captured: 06.03.2024

<div>ICENI PROJECTS LIMITED</div> <div>Da Vinci House 44 Saffron Hill</div> <div>London, ECN1 8FH</div> <div></div>	PROJECT	One Earth Solar Farm	DRAWN BY	JG	DRAWING NO.
	DRAWING TITLE	Appendix 12-6: Representative Viewpoint Photography	CHECKED BY	SG	Figure 12-32-W
	CLIENT	One Earth Solar Ltd	DATE	30/04/2024	REV
					-






Viewpoint 32      View from public footpath (NT/Weston/FP4), south of Tuxford Road (Summer)

Type: Type 1  
Projection: Cylindrical  
48% @ A3, 96% @ A1  
Camera: Canon EOS 6D MkII  
Lens: Canon 50mm

Looking direction: north  
HfoV: 90 degrees  
Date captured: 06.03.2024

<div>ICENI PROJECTS LIMITED</div> <div>Da Vinci House 44 Saffron Hill</div> <div>London, ECN1 8FH</div> <div></div>	PROJECT	One Earth Solar Farm	DRAWN BY	JG	DRAWING NO.
	DRAWING TITLE	Appendix 12-6: Representative Viewpoint Photography	CHECKED BY	SG	Figure 12-32-S
	CLIENT	One Earth Solar Ltd	DATE	30/04/2024	REV
					-






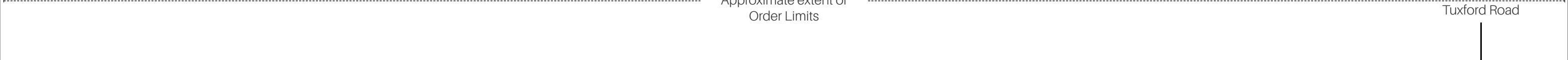
Viewpoint 33      View from Tuxford Road (Winter)

Type: Type 1  
Projection: Cylindrical  
48% @ A3, 96% @ A1  
Camera: Canon EOS 6D MkII  
Lens: Canon 50mm

Looking direction: east  
HfoV: 90 degrees  
Date captured: 06.03.2024

<div><div>ICENI PROJECTS LIMITED</div><div>Da Vinci House 44 Saffron Hill</div><div>London, ECN1 8FH</div></div> <div></div>	PROJECT	One Earth Solar Farm	DRAWN BY	JG	DRAWING NO.
	DRAWING TITLE	Appendix 12-6: Representative Viewpoint Photography	CHECKED BY	SG	Figure 12-33-W
	CLIENT	One Earth Solar Ltd	DATE	30/04/2024	REV
					-





Viewpoint 33      View from Tuxford Road (Summer)

Type: Type 1  
Projection: Cylindrical  
48% @ A3, 96% @ A1  
Camera: Canon EOS 6D MkII  
Lens: Canon 50mm

Looking direction: east  
HfoV: 90 degrees  
Date captured: 06.03.2024

<div><div>ICENI PROJECTS LIMITED</div><div>Da Vinci House 44 Saffron Hill</div><div>London, ECN1 8FH</div></div> <div></div>	PROJECT	One Earth Solar Farm	DRAWN BY	JG	DRAWING NO.
	DRAWING TITLE	Appendix 12-6: Representative Viewpoint Photography	CHECKED BY	SG	Figure 12-33-S
	CLIENT	One Earth Solar Ltd	DATE	30/04/2024	REV
					-





Viewpoint 34a View from National Cycle Network (Route 647) (Winter)

Type: Type 1  
Projection: Cylindrical  
48% @ A3, 96% @ A1  
Camera: Canon EOS 6D MkII  
Lens: Canon 50mm

Looking direction: east  
HfoV: 90 degrees  
Date captured: 06.03.2024





Viewpoint 34a      View from National Cycle Network (Route 647) (Summer)

Type: Type 1  
Projection: Cylindrical  
48% @ A3, 96% @ A1  
Camera: Canon EOS 6D MkII  
Lens: Canon 50mm

Looking direction: east  
HfoV: 90 degrees  
Date captured: 06.03.2024

<div><div>ICENI PROJECTS LIMITED</div><div>Da Vinci House 44 Saffron Hill</div><div>London, ECN1 8FH</div></div> <div></div>	PROJECT	One Earth Solar Farm	DRAWN BY	JG	DRAWING NO.
	DRAWING TITLE	Appendix 12-6: Representative Viewpoint Photography	CHECKED BY	SG	Figure 12-34a-S
	CLIENT	One Earth Solar Ltd	DATE	30/04/2024	REV






Viewpoint 34b      View north on Fledborough Road

Type: Type 1  
Projection: Cylindrical  
48% @ A3, 96% @ A1  
Camera: Canon EOS 6D MkII  
Lens: Canon 50mm

Looking direction: north  
HfoV: 90 degrees  
Date captured: 06.03.2024

<div><div>ICENI PROJECTS LIMITED</div><div>Da Vinci House 44 Saffron Hill</div><div>London, ECN1 8FH</div></div> <div></div>	PROJECT	One Earth Solar Farm	DRAWN BY	JG	DRAWING NO. Figure 12-34b-W
	DRAWING TITLE	Appendix 12-6: Representative Viewpoint Photography	CHECKED BY	SG	
	CLIENT	One Earth Solar Ltd	DATE	30/04/2024	REV -





Viewpoint 34b      View north on Fledborough Road

Type: Type 1  
Projection: Cylindrical  
48% @ A3, 96% @ A1  
Camera: Canon EOS 6D MkII  
Lens: Canon 50mm

Looking direction: north  
HfoV: 90 degrees  
Date captured: 06.03.2024

<div><div>ICENI PROJECTS LIMITED</div><div>Da Vinci House 44 Saffron Hill</div><div>London, ECN1 8FH</div></div> <div></div>	PROJECT	One Earth Solar Farm	DRAWN BY	JG	DRAWING NO.
	DRAWING TITLE	Appendix 12-6: Representative Viewpoint Photography	CHECKED BY	SG	Figure 12-34b-S
	CLIENT	One Earth Solar Ltd	DATE	30/04/2024	REV